

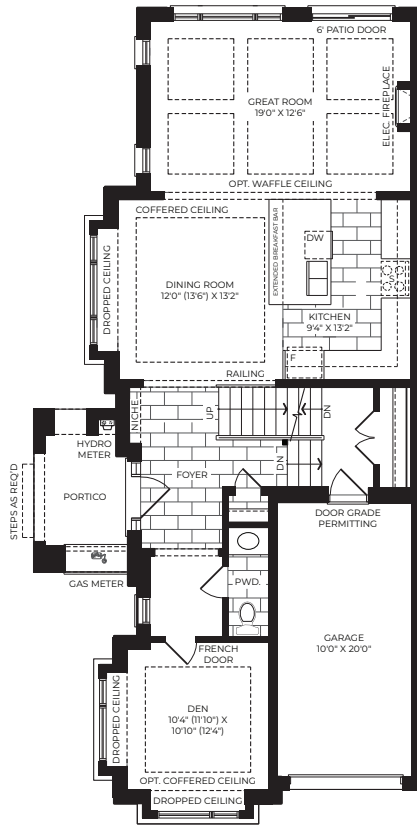
# FRESCA

Corner

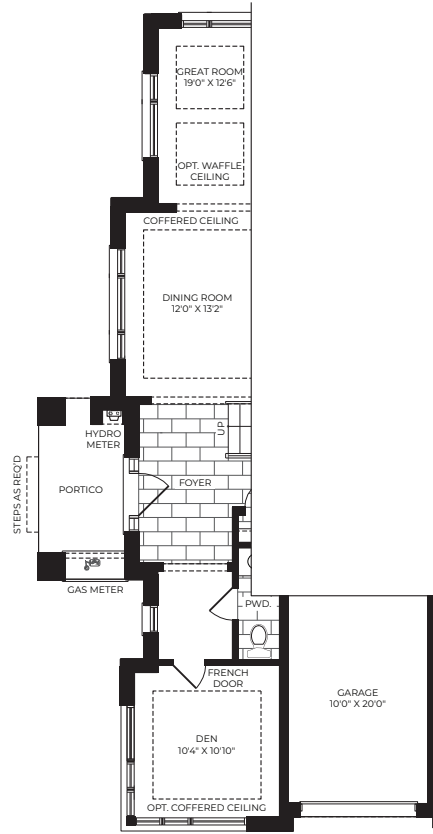
Elev A: 2292 sq.ft | Elev B: 2261 sq.ft

INCLUDES 139 SQ.FT OF FINISHED BASEMENT FOYER FOR ELEVATION A  
 INCLUDES 121 SQ.FT OF FINISHED BASEMENT FOYER FOR ELEVATION B

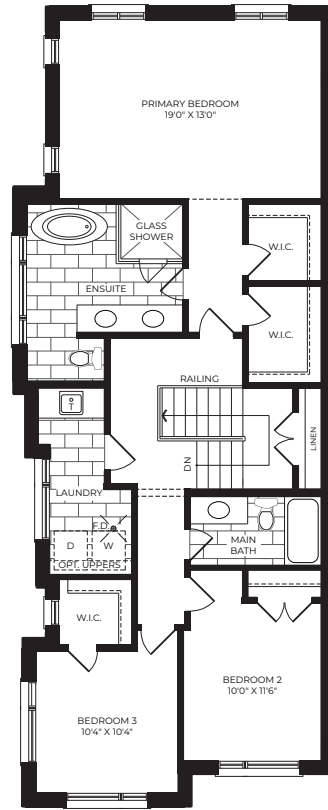
Live|lo  
 IN BOLTON



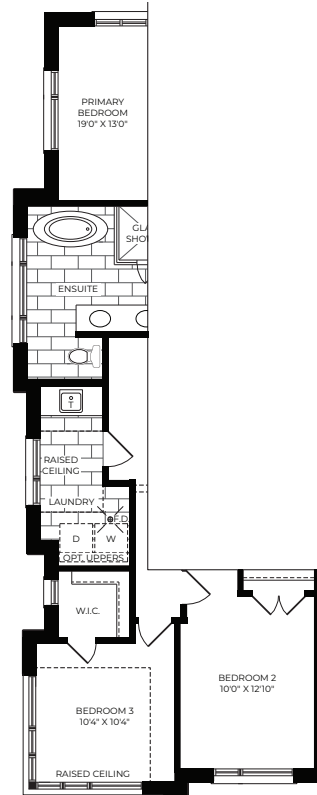
**ELEVATION A**  
 Ground Floor



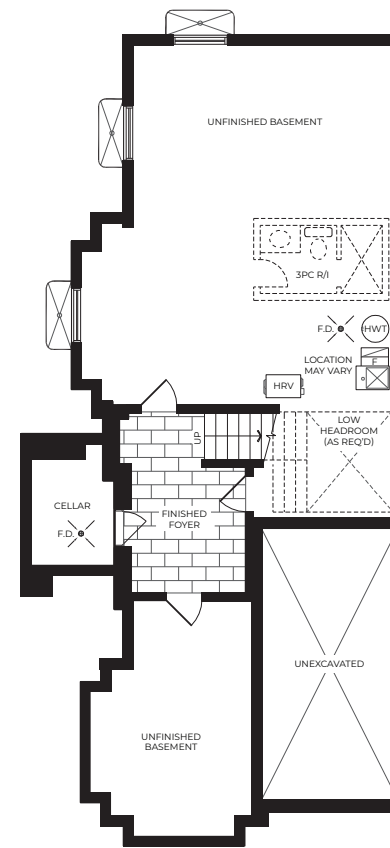
**ELEVATION B**  
 Ground Floor



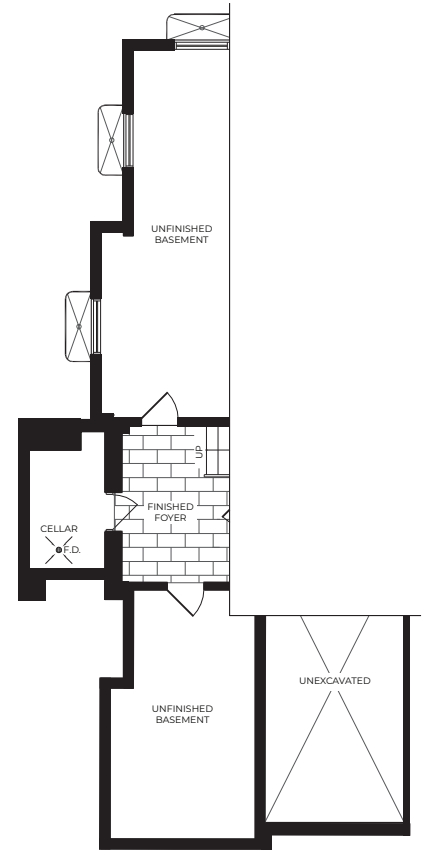
**ELEVATION A**  
 Second Floor



**ELEVATION B**  
 Second Floor



**ELEVATION A**  
 Basement



**ELEVATION B**  
 Basement